

PART OF THE NE.1/4, OF THE SW.1/4, & THE SE.1/4 OF THE SW.1/4, OF SEC. 27, T.6N., R.1W., S.L.B. & M.

96

NOB HILL ADDITION

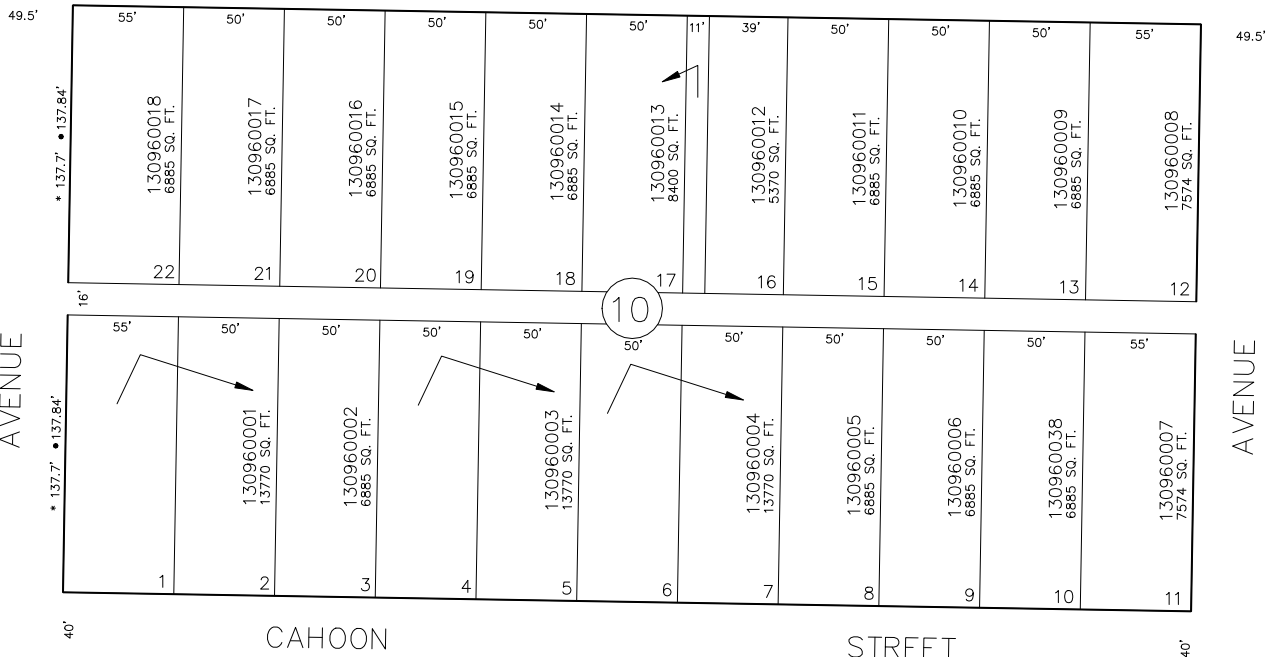
BLOCKS 10 & 11

IN OGDEN CITY

TAXING UNIT: 25 23RD STREET

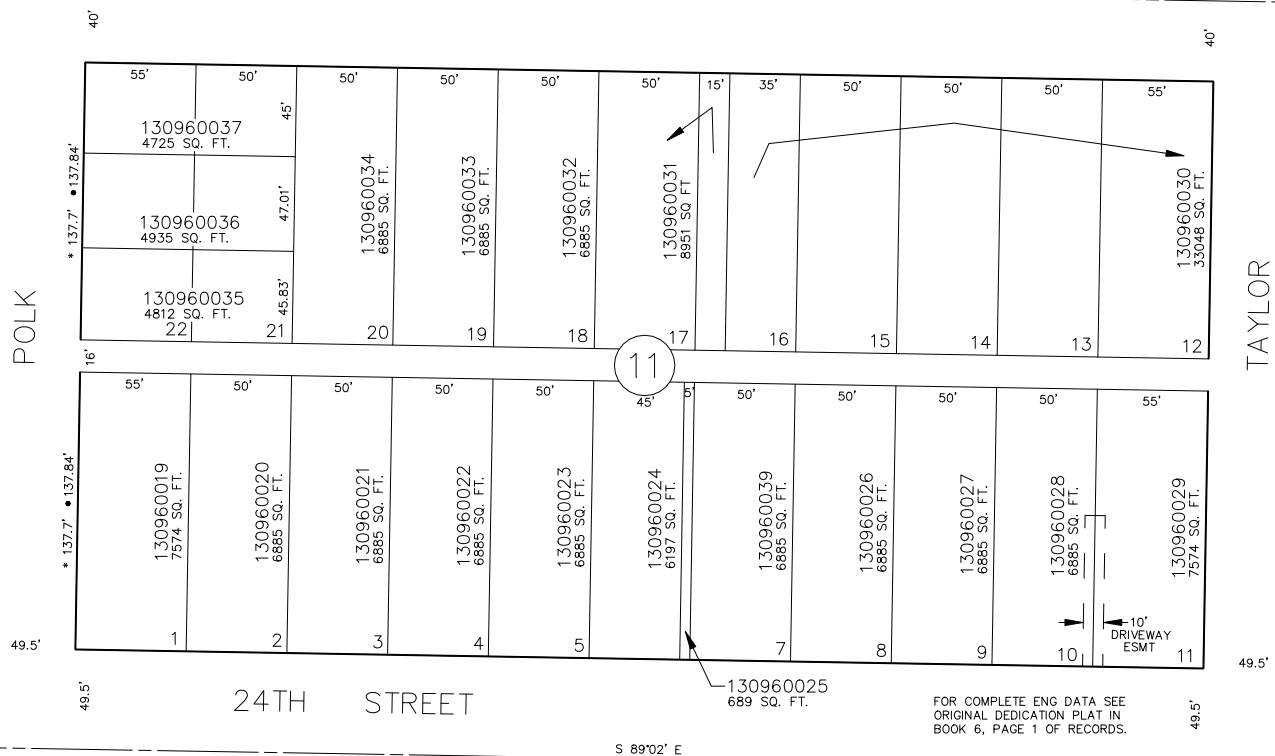
SCALE 1" = 50'

SEE PAGE 95



SEE PAGE 97

SEE PAGE 93



SEE PAGE 91

SEE PAGE 124

FOR COMPLETE ENG. DATA SEE
ORIGINAL DEDICATION PLAT IN
BOOK 6, PAGE 1 OF RECORDS.

• OGDEN CITY ENG. DEPT. PLATS
• ORIG. DED. PLAT

SEE PAGE 89

JPS 3-94